

GoodVibER

User manual and introductory guide

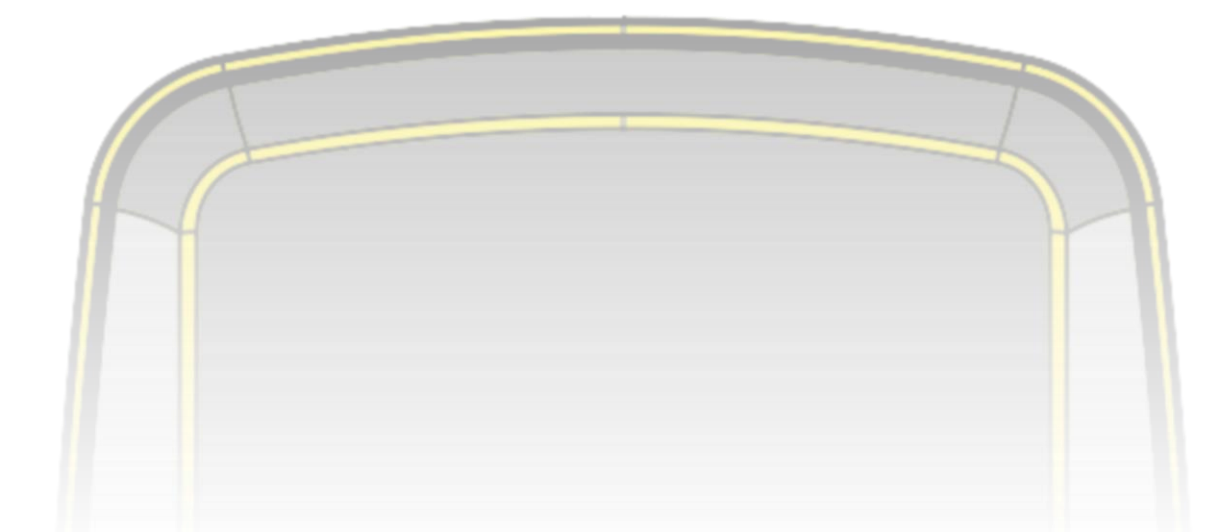
Dear user,

Thank you for choosing our **GoodVibER** device; Tamarri S.p.A. constantly strives to provide the user with an effective and superior experience. If you have any questions or concerns about your device, visit our website tamarri.it, or otherwise do not hesitate to contact us directly before using it. Read this manual carefully and follow the instructions step by step.



GoodVibER was born in the context of a pandemic which, among other aspects, is causing important consequences on an economic level. After several months of uncertainties, the restart is fundamental, necessary ... vital!

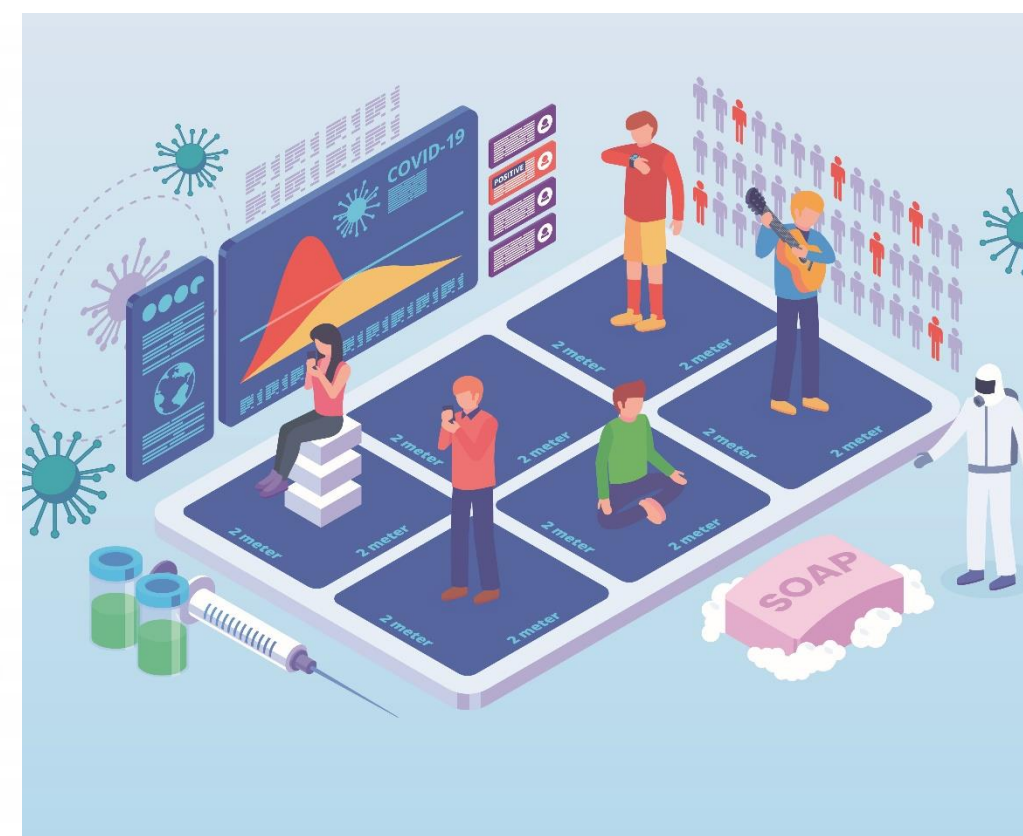
For this reason, Tamarri S.p.A, always attentive to safety within companies, has decided to invest in research and development to create a brand-new device for social distancing in the workplace.



SUMMARY PAGE

| | |
|---|----|
| Package contents | 3 |
| What is GoodVibER and how it works | 4 |
| Operating instructions | 5 |
| Technical features | 6 |
| Battery charging | 7 |
| Compliance and EC certification | 8 |
| Warnings and safety regulations | 9 |
| CAUTION | 9 |
| Disposal of the packaging and product | 10 |
| Protecting the environment, our model | 10 |

STOP



STOP



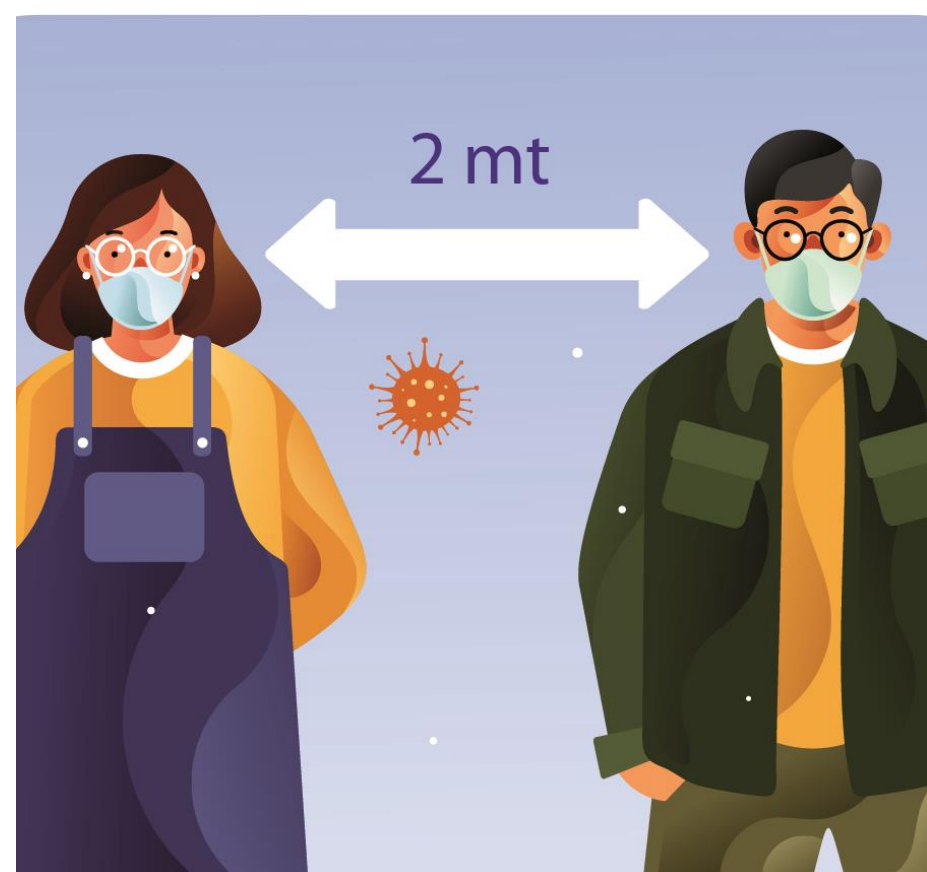
STOP



Package contents

- 1- **GoodVibER** wearable device (code **STS100**)
- 2- 220/5v power supply
- 3- Belt/pocket clip
- 4- Lanyard





What is GoodVibER and how it works

The operation is simple and immediate. Thanks to internal technology, **GoodVibER** is able to sense the proximity of another device within 2 metres. Each operator is warned through a vibration, an acoustic signal and the lighting of an LED, until the safety distance is restored. The logic of the warnings is that of the variable frequency: that is, once the 2-metre threshold has been exceeded, the devices begin to vibrate, ring and flash with a frequency that gradually increases until it becomes fixed, when approaching the one metre distance. If the safety distance of \geq two metres is restored within 20 seconds, the warnings will stop. If, on the other hand, the spacing below the threshold at risk of contagion (about 1 metre), extends beyond 20 seconds, the LED remains on and will only go off the next time the device is recharged.

CAUTION: in order to preserve the charge while not in use, the GoodVibER goes into standby. During this state the device DOES NOT WORK. A minimum vibration will be enough to reactivate it. The GoodViber only works when worn.

The **GoodVibER** is a small device with Bluetooth technology, which allows operators of any company, commercial or industrial, to maintain the safety distance. All in a **totally anonymous** way and **without tracking**.

Instructions for use

The use of the device is recommended in all workplaces that require spacing between people to prevent and / or contain contagion from Covid-19. From the small office, to the large industry, inside department stores, every workplace is suitable for **GoodVibER**.

The **GoodVibER** is supplied with two useful accessories:

- The spring clip, which allows you to wear it on a belt or on a breast pocket.
- The lanyard that allows you to wear it around your neck.



For a correct operation, always make sure that the adhesive is facing outwards and is clearly visible.

Technical features

- ✓ Dimension: 75x42x24
- ✓ Power supply: 5v Micro USB type B
- ✓ Average absorption: 15mA
- ✓ Technology: BLE4+
- ✓ Operating temperature di esercizio: -10°C / $+40^{\circ}\text{C}$ (do not leave the device in direct sunlight)
- ✓ Room temperature for battery charging: 0°C / $+40^{\circ}\text{C}$

#distantimavicini



Battery charging

Use the supplied power supply to recharge the device. It is possible to recharge the **GoodVibER** with alternative power supplies (maximum voltage 5v, Micro USB type B connector).

Time for a full charge: about 4h

The **GoodVibER** is equipped with a high efficiency lithium battery. A full charge allows the use of the device for 3 8-hour work shifts, i.e. 24 continuous hours, without the need to be recharged.

- When the battery reaches the minimum charge, each movement of the **GoodVibER** corresponds to a sequence of close double flashes. In this situation, the device will stop its operation and must be recharged immediately.
- When you insert the micro USB of the power supply for charging, a sequence of 6 consecutive flashes of the red LED is activated, and then goes off.
- Once the charge is complete, the red LED lights up permanently. As soon as the micro USB of the power supply is removed, the light turns off and the **GoodVibER** is ready to be worn



Compliance and EC certification

Hereby, Tamarri S.p.A. as a distributor based in the European Union, declares that the devices identified with STS100 comply with the essential requirements and other relevant provisions established by the Directives:

- ✓ 2014/53 of 16/04/2014 "RED" for the occupation of the electromagnetic spectrum
- ✓ 2014/30 of 26/02/2014 "EMC"
- ✓ 2014/35 of 26/02/2014 "LVD"

Harmonized standards

- ✓ ETSI EN 300 330 V2.1.1 (2016-11)
- ✓ ETSI EN 301 489-1 V2.2.0 and ETSI EN 301 489-3 V2.1.1
- ✓ EN 62368-1 08/2014 Audio/Video, information and communication technology - equipment - Part1

It is possible to request a complete copy of the certificate of conformity through the website www.tamarri.it or by calling our customer service on 051 641.44.95 / 96

#distantimavicini



Warnings and safety rules

Instruction manual relative to the **SS100** code

The manufacturer declines all responsibility for any damage caused by failure to comply with the instructions provided in this manual.

Caution

Please read this carefully and keep the instruction manual, as it contains important information. Be sure to read this manual before wearing the device. Be sure to observe the precautions described in this manual to avoid safety hazards.

Disposal of the packaging and the product

Protecting the environment, our model

The company Tamarri S.p.A. has assumed the social responsibility of contributing to a better and cleaner world. Our actions, from product and process planning, to production and distribution, to the disposal of end-of-life products, take into account the great importance we place on the environment.



The crossed-out wheelie bin symbol shown on the equipment, batteries, accumulators, power supplies directly on the product or on their packaging, indicates that at the end of their useful life they must be collected separately from other waste. The user must therefore transfer the aforementioned end-of-life products to the appropriate separate collection centres for electrical and electronic waste and, under no circumstances, dispose of them in the environment. This manual contains information on the use, type and replacement of batteries. The user is required to deliver the batteries that have reached the end of their life to the appropriate separate waste collection centres set up by the competent authorities.

Appropriate separate collection for the subsequent start-up of equipment, discarded batteries / accumulators disposed of for recycling, treatment and environmentally compatible disposal, helps to avoid possible negative effects on the environment and on health by favouring the reuse and / or recycling of materials of which they are composed.

Lo smaltimento abusivo di apparecchiature, di batterie ed accumulatori da parte dell'utente, comporta l'applicazione delle sanzioni di cui alle normative di legge vigenti.



Eco-contributo RAEE e Pile assolto dove dovuto.

Ai sensi del D.Lgs. 14-03-2014, n. 49: "Attuazione della direttiva 2012/19/UE sui rifiuti di apparecchiature elettriche ed elettroniche (RAEE)" e del D. Lgs. 20-11-2008, n. 188 "Attuazione della direttiva 2006/66/CE concernente pile, accumulatori e relativi rifiuti e successivi emendamenti".