

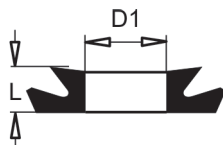
GUARNIZIONI FRENO
BRAKE CUPS

Gommino a tazza per cilindretti
Brake cup for wheel cylinder



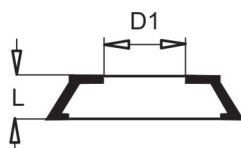
Codice Code	∅ mm	∅ inch	Tipo olio - Oil type
GO58	14.28	9/16"	Olio freni dot - Dot brake oil
GO11	15.8	5/8"	Olio freni dot - Dot brake oil
GO01	19.05	3/4"	Olio freni dot - Dot brake oil
GO433M	19.05	3/4"	Olio minerale - Mineral oil
GO02	22.22	7/8"	Olio freni dot - Dot brake oil
GO431M	22.22	7/8"	Olio minerale - Mineral oil
GO13	23.81	15/16"	Olio freni dot - Dot brake oil
GO427M	23.81	15/16"	Olio minerale - Mineral oil
GO03	25.4	1"	Olio freni dot - Dot brake oil
GO397M	25.4	1"	Olio minerale - Mineral oil
GO09	26.98	1" 1/16	Olio freni dot - Dot brake oil
GO04	28.57	1" 1/8	Olio freni dot - Dot brake oil
GO61	28.57	1" 1/8	Olio minerale - Mineral oil
GO05	31.75	1" 1/4	Freni dot - Dot brakes
GO428M	31.75	1" 1/4	Olio minerale - Mineral oil
GO08	34.9	1" 3/8	Olio freni dot - Dot brake oil
GO06	38.1	1" 1/2	Olio freni dot - Dot brake oil
GO12	41.2	1" 5/8	Olio freni dot - Dot brake oil
GO07	44.4	1" 3/4	Olio freni dot - Dot brake oil
GO42	47.2	1" 7/8	Olio freni dot - Dot brake oil
GO10	50.8	2"	Olio freni dot - Dot brake oil

Gommino a doppio labbro per pompe e cilindretti
Brake cup with double lip for master cylinders and wheel cylinders



Codice Code	∅ mm	∅ inch	D1	L	Tipo olio - Oil type
GO14	19.05	3/4"	10,5	6,5	Olio freni dot - Dot brake oil
GO14M	19.05	3/4"	10,5	6,5	Olio minerale - Mineral oil
GO15	22.22	7/8"	13,5	7	Olio freni dot - Dot brake oil
GO439M	22,22	7/8"	13,5	7	Olio minerale - Mineral oil
GO127	23.81	15/16"	14,5	8	Olio freni dot - Dot brake oil
GO435M	25.4	1"	15,9	6,6	Olio minerale - Mineral oil
GO16	25.4	1"	16,5	8	Olio freni dot - Dot brake oil
GO508M	25.4	1"	16,5	8	Olio minerale - Mineral oil
GO17	26.98	1" 1/16	17,5	7	Olio freni dot - Dot brake oil
GO20	28.57	1" 1/8	17,5	9	Olio freni dot - Dot brake oil
GO436	28.57	1" 1/8	19	7,4	Olio freni dot - Dot brake oil
GO436M	28.57	1" 1/8	19	7,4	Olio minerale - Mineral oil
GO18	31.75	1" 1/4	21	8	Olio freni dot - Dot brake oil
GO432M	31.75	1" 1/4	21	8	Olio minerale - Mineral oil
GO397	38,1	1" 1/2	27,3	8,7	Olio freni dot - Dot brake oil
GO425M	38,1	1" 1/2	27,3	8,7	Olio minerale - Mineral oil
GO437	44,45	1" 3/4	31,4	10,2	Olio freni dot - Dot brake oil
GO426M	44,45	1" 3/4	31,4	10,2	Olio minerale - Mineral oil

Gommino a labbro per pompe Brake cup with lip
for master cylinders

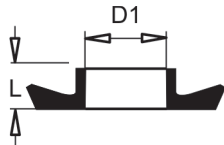


Codice Code	∅ mm	∅ inch	D1	L	Tipo olio - Oil type
GO504	22.22	7/8"	11	8,5	Olio freni dot - Dot brake oil
GO504M	22,22	7/8"	11	8,5	Olio minerale - Mineral oil
GO503	25.4	1"	14	9	Olio freni dot - Dot brake oil
GO503M	25.4	1"	14	9	Olio minerale - Mineral oil

A14 **GUARNIZIONI FRENO**
BRAKE CUPS

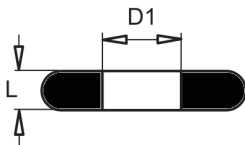
A
14

Gommino a singolo labbro
per pompe e cilindretti
Brake cup with single lip
for master cylinders and wheel cylinders



Codice Code	∅ mm	∅ inch	D1	L	Tipo olio - Oil type
GO394	17,47	11/16"	10,5	6,5	Olivo freni dot - Dot brake oil
GO163	33,5	-	21,5	9	Speciale / special LANSING
GO452M	31,75	1" 1/4	17,4	6,1	Olivo minerale - Mineral oil
GO453M	31,75	1" 1/4	19,75	5,7	Olivo minerale - Mineral oil

Gommino ad anello
per pompe e cilindretti
Brake cup for master cylinders and wheel cylinders



Codice Code	∅ mm	∅ inch	D1	L	Tipo olio - Oil type
GO21	19,05	3/4"	11	4	Olivo freni dot - Dot brake oil
GO21M	19,05	3/4"	11	4	Olivo minerale - Mineral oil
GO22	22,22	7/8"	14,5	5	Olivo freni dot - Dot brake oil
GO22M	22,22	7/8"	14,5	5	Olivo minerale - Mineral oil
GO23	25,4	1"	16,5	6	Olivo freni dot - Dot brake oil
GO23M	25,4	1"	16,5	6	Olivo minerale - Mineral oil
GO24	28,57	1" 1/8	19,5	6	Olivo freni dot - Dot brake oil
GO24M	28,57	1" 1/8	19,5	6	Olivo minerale - Mineral oil
GO25	31,75	1" 1/4	20	7,5	Olivo freni dot - Dot brake oil
GO25M	31,75	1" 1/4	20	7,5	Olivo minerale - Mineral oil
GO177	38,1	1" 1/2	23	8	Olivo freni dot - Dot brake oil
GO179	44,4	1" 3/4	29	8	Olivo freni dot - Dot brake oil
GO450M	44,4	1" 3/4	29	8	Olivo minerale - Mineral oil
GO180	50,8	2"	33	9	Olivo freni dot - Dot brake oil
GO181	57,15	2" 1/4	39	9	Olivo freni dot - Dot brake oil

Calotta per pompe freno
Brake cup for master cylinder

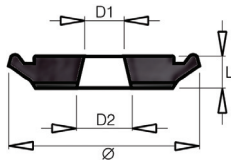


Codice Code	∅ mm	∅ inch	Tipo olio - Oil type
GO26	19,05	3/4"	Olivo freni dot - Dot brake oil
GO27	22,22	7/8"	Olivo freni dot - Dot brake oil
GO28	25,4	1"	Olivo freni dot - Dot brake oil
GO398M	25,4	1"	Olivo minerale - Mineral oil
GO29	28,57	1" 1/8	Olivo freni dot - Dot brake oil
GO434M	28,57	1" 1/8	Olivo minerale - Mineral oil
GO30	31,75	1" 1/4	Olivo freni dot - Dot brake oil
GO430M	31,75	1" 1/4	Olivo minerale - Mineral oil
GO429M	38,1	1" 1/2	Olivo minerale - Mineral oil

A14

CUFFIE PARAPOLVERE BOOTS

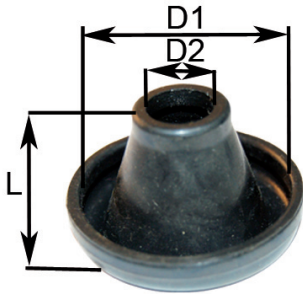
Guarnizione pompe e cilindretti freno
Brake cup for master cylinders and wheel cylinders



Codice Code	Ø mm	Ø inch	D1	D2	L	Tipo olio Oil type
GO19	15.8	5/8"	9	-	4,5	Olío freni dot - <i>Dot brake oil</i>
GO194M	25.4	1"	16.1	16.4	5	Olío minerale - <i>Mineral oil</i>
GO90	31.75	1" 1/4	22.1	22.4	5	Olío freni dot - <i>Dot brake oil</i>
GO182M	31.75	1" 1/4	22.1	22.4	5	Olío minerale - <i>Mineral oil</i>
GO60	31.75	1" 1/4	16.3	17	10.2	Olío minerale - <i>Mineral oil</i>
GO32	34.9	1" 3/8	24.6	25	5.5	Olío freni dot - <i>Dot brake oil</i>
GO183M	34.9	1" 3/8	24.6	25	5.5	Olío minerale - <i>Mineral oil</i>
GO33	38.1	1" 1/2	26.2	26.6	5.5	Olío freni dot - <i>Dot brake oil</i>
GO31	44.4	1" 3/4	31.5	32	6	Olío freni dot - <i>Dot brake oil</i>
GO37	46.83	-	34.3	34.8	5.5	Olío freni dot - <i>Dot brake oil</i>
GO36	50.8	2"	35.7	36.35	7.5	Olío freni dot - <i>Dot brake oil</i>
GO35	53.98	-	38.8	39.5	7.5	Olío freni dot - <i>Dot brake oil</i>
GO34	57.15	2" 1/4	41	41.8	8	Olío freni dot - <i>Dot brake oil</i>

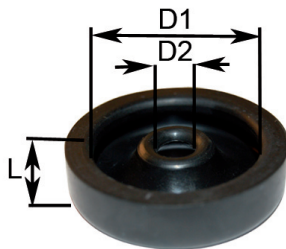
**A
14**

Cuffie parapolvere - Brake Boots



Codice Code	D1	D2	L
GO52	17	5	10
GO53	22	6	10
GO57	23	10	15
GO43	26	12	15,5
GO54	28	8	11
GO55	24	9	12
GO56	32	7	13
GO462	33	14	24
GO44	43	12	29

Cuffie parapolvere - Brake Boots



Codice Code	D1	D2	L
GO45	20	6	9
GO46	24	7	10
GO47	26	7,5	10
GO48	31	8	11
GO49	34.5	8	12
GO50	36	11	13
GO51	45	12	12

Cuffie parapolvere - Brake Boots



Codice Code	Ø interno/internal
GO38	25
GO39	30
GO40	32
GO41	40

A14 **CONFEZIONI GUARNIZIONI FRENO**
BRAKE CUPS SET

**A
14**



SS100 Confezione gommini per **cilindretti freno**
Brake cups for wheel cylinder sets

Codice Code	Quantità Quantity	∅	Disegno Draw
GO01	10	3/4"	
GO02	10	7/8"	
GO03	10	1"	
GO04	10	1" 1/8	
GO05	10	1" 1/4	
GO14	10	3/4"	
GO15	10	7/8"	
GO16	10	1"	
GO17	10	1" 1/16	
GO18	10	1" 1/4	



SS101 Confezione gommini per **pompe freno**
Brake cups for master cylinder sets

Codice Code	Quantità Quantity	∅	Disegno Draw
GO26	10	3/4"	
GO27	10	7/8"	
GO28	10	1"	
GO29	10	1" 1/8	
GO30	10	1" 1/4	
GO21	10	3/4"	
GO22	10	7/8"	
GO23	10	1"	
GO24	10	1" 1/8	
GO25	10	1" 1/4	



MICO - SAFIM
FTE - ATE

Codice Code	∅ Interno Internal ∅	OLIO Freni Brake Fluid	Applicazione Used for
KIT709	3/4"	19.05	DOT USA
KIT2	1"	25.4	DOT USA
KIT137	1"	25.4	DOT USA
KIT100	1" 1/16	26.9	DOT USA
KIT25	1" 1/8	28.5	DOT USA
KIT1	1" 1/4	31.7	DOT USA
KIT39	1" 1/2	38.1	DOT USA
KIT3	3/4"	19.4	DOT ATE-FAG
KIT4	7/8"	22.22	DOT ATE-FAG
KIT5	1"	25.4	DOT ATE-FAG
KIT7	1"	25.4	DOT BT
KIT230M	1"	25.4	Olio minerale - Mineral oil FIAT
KIT8	7/8"	22.22	DOT BT



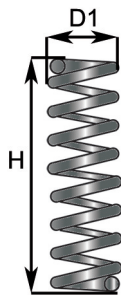
I nostri ricambi non sono originali ma con essi perfettamente intercambiabili
Our spare parts are not original but with them perfectly interchangeable

A14

**KIT RIPARAZIONE
BRAKE KIT**

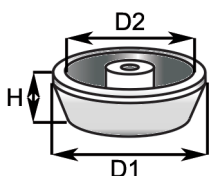
A
14

Molle cilindretti - Wheel cyl. springs



Codice Code	D1	Ø Filo / Wire	H
Z675	11,3	0,8	47
Z676	12	1,2	43,5
Z755	15,4	1,2	36
Z679	15,4	1,4	60
Z407	16,2	1,2	46
Z578	16,2	1,2	48
Z677	21,5	1,7	73,5
Z678	23,5	1,4	43

Scodellini Molle - Spring cups



Codice Code	D1	D2	H
Z674	22	13,5	7,5
Z409	25	18,0	9,0
Z408	28	18,0	9,0

Valvole pompe freno
Master cylinder valves



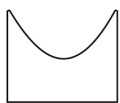
Codice Code	Ø mm	Ø inch	Disegno Draw	Tipo olio - Oil type
RD003	19.05	3/4"	1	Olio freni dot - Dot brake oil
RD002	22.22	7/8"	1	Olio freni dot - Dot brake oil
RD002M	22.22	7/8"	1	Olio minerale - mineral brake oil
RD010	25.4	1"	1	Olio freni dot - Dot brake oil
RD010M	25.4	1"	1	Olio minerale - mineral brake oil
RD001	25.4	1"	3	Olio freni dot - Dot brake oil
RD007	28,57	1"-1/8	3	Olio freni dot - Dot brake oil
RD006	31,75	1"-1/4	3	Olio freni dot - Dot brake oil
RD005	38,1	1"-1/2	3	Olio freni dot - Dot brake oil
RD008	19.05	3/4"	2	Olio freni dot - Dot brake oil
RD009	22.22	7/8"	2	Olio freni dot - Dot brake oil
RD004	25.4	1"	2	Olio freni dot - Dot brake oil



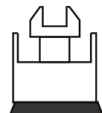
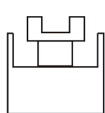
PISTONI
PISTONS

**A
14**

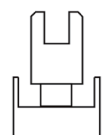
A B



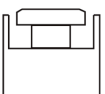
C G



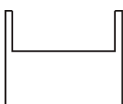
D F



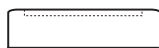
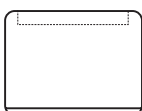
E O



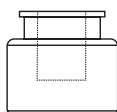
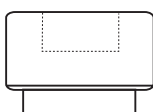
H



I L



M N

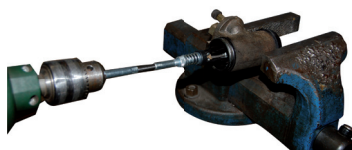


Codice Code	∅ mm	∅ inch	Altezza Height	Pistone-Piston
P002	19.4	3/4"		A
P002/A	19.4	3/4"		C
P003	22.22	7/8"		A
P003/A	22.22	7/8"		C
P004	22.22	7/8"		B
P013	22.22	7/8"		D
P012	23.81	15/16"		A
P012/A	23.81	15/16"		C
P005	25.4	1"		A
P005/A	25.4	1"		C
P005/B	25.4	1"		E
P042	25.4	1"		O
P006	28.57	1" 1/8		A
P021	28.57	1" 1/8		B
P006/A	28.57	1" 1/8		C
P006/B	28.57	1" 1/8		F
P022	28.57	1" 1/8		G
P007	31.75	1" 1/4		A
P007/A	31.75	1" 1/4		C
P008	34.9	1" 3/8		A
P008/A	34.9	1" 3/8		C
P014	34.9	1" 3/8		H
P009	38.1	1" 1/2		A
P009/A	38.1	1" 1/2		C
P020	38.1	1" 1/2		H
P019	40		16	L
TA11579	40		25,0	N
TA42579	42		34,5	N
P018	42		30,5	M
P001/A	48		30	M
P001	48		34	M
P010	48		16	L
P011	50.8		35	I
P016	56		31,5	M



A14

GUARNIZIONI FRENO
BRAKE CUPS



SS200

Lappatore di interni per cilindretti e pompe freno diametri 3/4"-_2"-1/2"
Regenerator for wheels and master cylinders diameters 3/4"-_2"-1/2"

A
14



Z69

Lubrificante per montaggio guarnizioni freno
Grease for brake seal



SAE J1704
FMVSS 116
ISO4925

TA32404

1L OLIO FRENI SINTETICO DOT4 / *SYNTHETIC BRAKE OIL DOT4*



PSA PEUGEOT
CITROEN B712710

TA32405

1L OLIO FRENI MINERALE LHM / *MINERAL BRAKE OIL LHM*