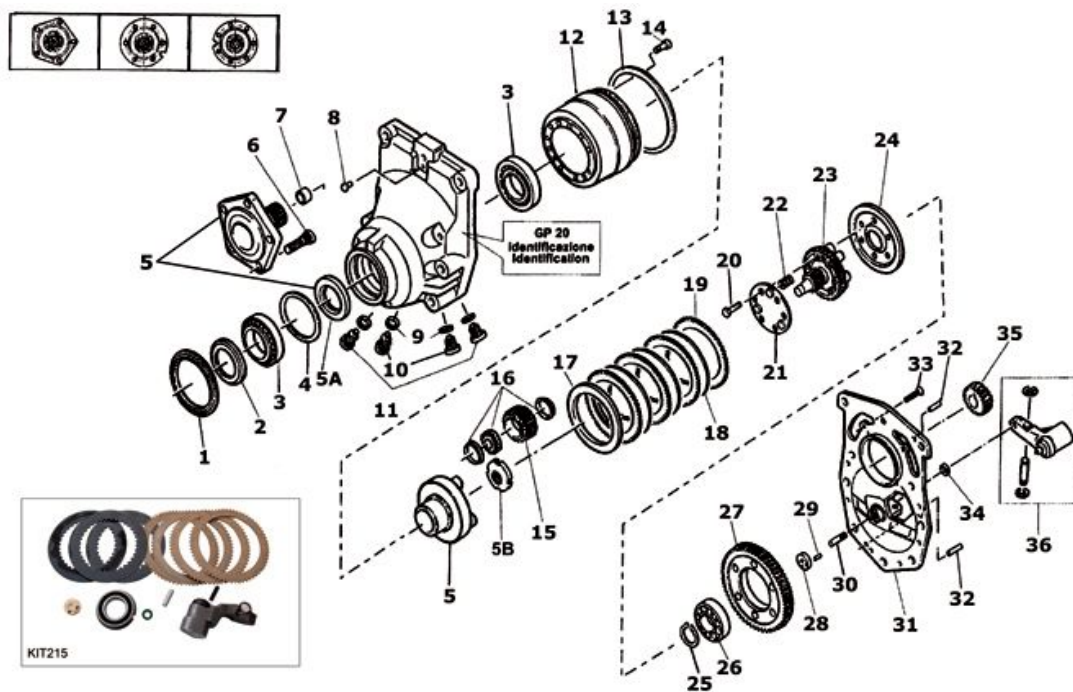
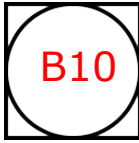


REDUCTION GEARS

ZF - GP20

Used for for: Cesab, Still,
Linde, Lugli, Montini

Cod.	N.	Description	Technical data	Qty
kit215	0	Repai kit	Positions (18-19 + 26 + 28 + 30 + 34 + 36)	1
PO284	1	Oil Seal	100X120X5,5	1
6262	1	Oil Seal	95X115X5,5	1
GO197	2	Nilos		1
6269	3	Bearing		2
3000	4	Shim		1
2505	5	Shaft Assy	Pentagonal 5 Holes	1
7505	5	Shaft Assy	Round 6 holes	1
6505	5	Shaft Assy	Round 7 holes	1
PO364	5A	Oil Seal		1
5864	5B	Ring Nut		1
9269	6	Stud Bolt	M 14X1,5	5-6-
7353	7	Bearing		1
3165	8	Breather		1
8301	9	Gasket		4
2013	10	Cap		2

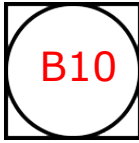


REDUCTION GEARS

ZF - GP20

Used for for: Cesab, Still,
Linde, Lugli, Montini

Cod.	N.	Description	Technical data	Qty
9419	11	Cap		2
1100	12	Gear		1
5900	13	Shim Ring		1
3453	14	Screw		10
4353	15	Gear	25 Teeth	3
5353	16	Inside Bearing	20mm	3
7253	17	Spacer	H=4,8mm	1
8253	17	Spacer	H=5,3mm	1
9253	17	Spacer	H=5,8mm	1
7300	18	Steel Disc	H=1,8mm	3
3600	19	Sintered disc	H=1,8mm	4
6569	20	Screw		6
1354	21	Spring Support	52X89,5 (6 Holes)	1
1200	22	Spring		3
2353	23	Gear		1
0400	24	Plate	H=6mm	1
1353	24	Plate	H=8mm	1
4201	25	Seeger		1
2182	26	Bearing		1
5602	27	Ring Gear	86 Teeth	1
2399	27	Ring Gear	88 Teeth	1
2502	27	Ring Gear	90 Teeth	1
2054	27	Ring Gear	92 Teeth	1
8502	27	Ring Gear	102 Teeth	1
0592	28	Pad		1
0353	29	Plug		1
6209	30	Pin	L=34,6mm	1



REDUCTION GEARS

ZF - GP20

Used for for: Cesab, Still,
Linde, Lugli, Montini

Cod.	N.	Description	Technical data	Qty
4009	30	Pins Kit	(10pcs)	1
*	31	Cover		1
2122	32	Pin		2
1369	33	Screw		8
GO106	34	Gasket		1
3303	35	Pinion	23 Teeth	1
6869	35	Pinion	25 Teeth	1
5869	35	Pinion	27 Teeth	1
2152	35	Pinion	29 Teeth	1
7502	35	Pinion	37 Teeth	1
CF293	36	Brakr cylinder	Ø 19,4 (3/4")	1
*	0	Note	Supply only with the serial number	